

A light gray map of the state of Ohio is centered on the slide. Overlaid on the map are several white circles of varying sizes, some of which are overlapping. The text of the slide is positioned over this map.

# **Bidders Conference**

## **RFP OEO 09-10**

Energy Efficiency Conservation Block Grant Program –  
Local Governments

Greg Payne  
Ohio Department of Development-  
Ohio Energy Office

## General Information / Ground Rules

- Please mute your phone at the start of the call
- Hit \*2 to mute and un-mute your line
- Please hold your questions till the end
- A copy of the presentation can be found at:  
<http://www.development.ohio.gov/recovery/energy/FundingOpportunities.htm> Under the Bidders' Conference Materials: Presentation

## Program Purpose

1. To spur economic growth and create/retain jobs
2. To assist state, local, and tribal governments in implementing strategies to:
  - a. Reduce fossil fuel emissions;
  - b. Reduce total energy use;
  - c. Improve energy efficiency in the transportation building, and other appropriate sectors.

## Available Funding

\$15 million will be available according to the following breakdown:

- **\$3 million** is available for the twenty-six (26) county governments with populations under 39,000\* and the twelve (12) city governments located in these counties.
- **\$4 million** is available for the twenty-six (26) county governments with populations between 39,001 to 65,000\* and the thirty-four (34) city governments located in these counties.
- **\$8 million** is available for the twenty-six (26) county governments with populations at 65,001 and above\* and the sixty-eight (68) city governments located in these counties.

\* Consistent with federal direct allocation calculations, the population for each of the 78 counties is based upon the 2007 census estimates and is modified to subtract city populations that received direct EECBG allocations.

The minimum amount for an individual award made under this announcement will be \$150,000.

## First Steps

- Download a copy of the Guidelines, application, and attachments
- Check to make sure you are an eligible entity, can be found on Page 4 of the Guidelines
- Obtain a Dun and Bradstreet Data Universal Number System Number (DUNS) number
- Register with the Central Contractor Registration (CCR)
- Submit a brief summary of your project through the [www.recovery.ohio.gov](http://www.recovery.ohio.gov) website, if you haven't already. This is essentially your letter of intent and is not sufficient for application.

## Eligible Applicants

- The 78 county governments that did not receive a direct allocation from the federal government for the Energy Efficiency Conservation Block Grant Program.
- The 114 city governments that are located in these 78 counties.
- Townships, villages, and quasi-governmental entities (parks, K-12, county boards, county commissions) may partner with an eligible city or county, but cannot apply directly.

## Important Dates

- RFP Issued: October 20<sup>th</sup>, 2009
- Inquiry Period Ends: November 20<sup>th</sup> 2009, 8am
- Summaries submitted: November 20<sup>th</sup> 2009, 2pm
- Full Proposals Due: November 30<sup>th</sup> 2009, 2pm
- Awardees Notified: Winter 2010  
(Jan/Feb 2010)

## Eligible Activities

- **Energy efficiency retrofits (including energy saving performance contracting):**
- **Energy distribution:**
  - District heating and cooling systems, Combined heat and power systems, Cogeneration systems, Energy storage systems, Absorption chillers, Desiccant humidifiers, Micro turbines, Ground source heat pumps
- **Traffic signals and street lighting:**
- **Reduction and capture of methane and greenhouse gases:**
  - Anaerobic digestion, capture of methane from wastewater treatment, municipal solid waste
- **Renewable energy technologies on government buildings:**
  - Solar PV, Wind, Solar Thermal, Fuel Cells, Biomass

## Energy Efficiency Retrofits

- Fund residential, commercial, industrial, or local government energy efficiency facility retrofits
- Implement energy service company retrofit recommendations
- Conduct re-commissioning
- For existing buildings or facilities
  - Insulation, installation of efficient lighting, heating, venting and air conditioning (HVAC) upgrades, weather sealing, the purchase and installation of ENERGY STAR appliances, replacement of windows and doors, etc. Retrofits do not include expansions of buildings or facilities.

## Energy Distribution Technologies

- Technologies that significantly increase energy efficiency
- Build an integrated system within the electricity grid consisting of thermal generation, energy storage, and energy management systems—such as combined cooling, heat and power (CHP)
- Install numerous, small stand-alone electricity generators to provide back-up power at designated locations as part of an energy assurance plan

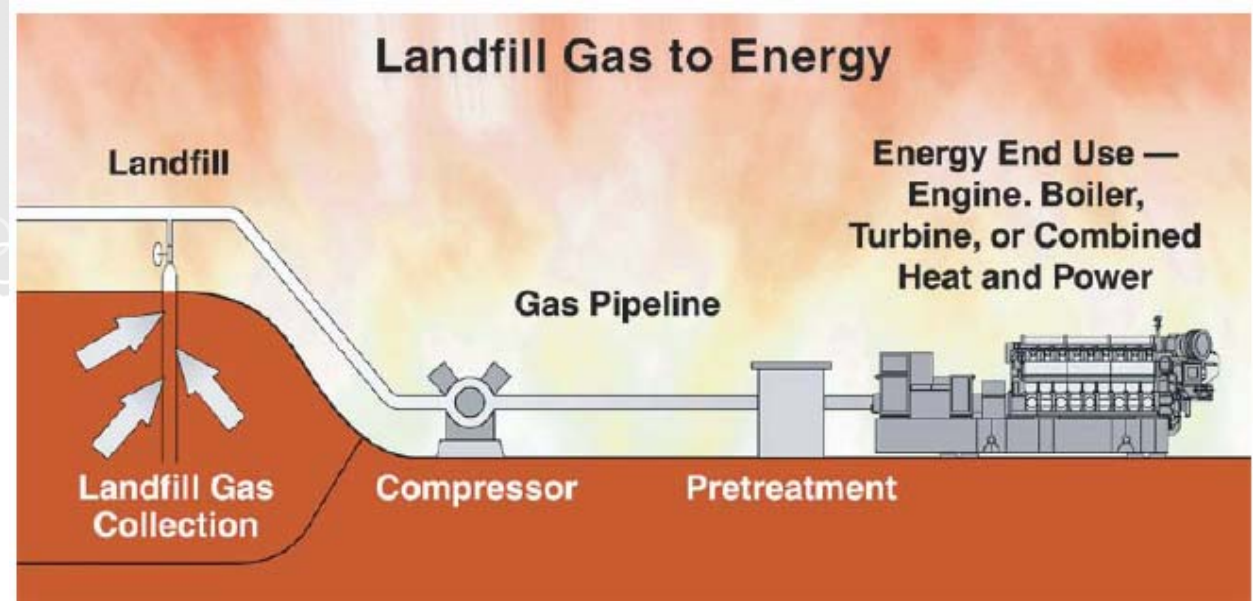
## Traffic Signals and Street Lighting

- Install and/or replace traffic signals and street lighting with energy efficient lighting technologies, including light emitting diodes; and any other technology of equal or greater energy efficiency



## Reduction and Capture of Methane and Greenhouse Gases

- Purchase and implement technologies to reduce, capture, and use methane and other greenhouse gases such as a Landfill Gas (LFG) Project;
- Connect related power sources such as a wastewater treatment facility with a LFG operation.



## Development or Implementation of On-Site Renewable Energy on Government Buildings



- Develop, implement, and install onsite renewable energy technology that generates electricity from renewable resources, including solar energy; wind energy; fuel cells; and biomass
- Develop a city-wide power purchase agreement for solar/renewable energy installations on municipal facilities and buildings
- Install renewable energy systems on targeted city facilities—park facilities, libraries, fire stations, etc.

## Restrictions

- Construction of a new building, an addition, or expansion
- Non-energy related alternations, upgrades, or repairs
- For gambling establishments, aquariums, zoos, gold courses, or swimming pools
- To purchase land, a building or a structure
- Up to 10% or \$75,000, whichever is less can be used for administrative expenses, excluding costs of meeting the reporting requirements.

## Criteria for Selection

- A. Project Readiness (25 Points)
- B. Economic Impact for Ohio (20 Points)
- C. Positive Impact on Distressed Communities (15 Points)
- D. Innovation, Transferability, Collaboration (15 Points)
- E. Cost Effective Measurable Energy Savings/Energy Production Impacts (15 Points)
- F. Leverage/Match (10 Points)

## Project Readiness

### 25 Points Available

- At a minimum projects must be able to be completed prior to July 20, 2012 to be considered.
- Permits in place, proof of contact with regulatory agencies, environmental impacts assessed, historic preservation issues assessed and mitigated
- Staff's demonstrated ability to implement and report projects.
- Engineering analysis, energy audits, vendor quotes, financing arrangements in place.

## Economic Impact for Ohio

### 20 Points Available

- Number of jobs created/retained, both direct and indirect.
- Provide estimates for Ohio component value of the total projects costs.
- Complete Table 1, 2, 3, and 4 and provide supporting documentation for any indirect job creation.
- Include current level of employment on the Application Form.

## Positive Impact on Distressed Communities

### 15 Points Available

- This project will use \_\_\_% of components that are locally produced (within 100 miles of jurisdiction)
  - 2% or less: 0 points
  - 3-9%: 1 Point
  - 10-19%: 3 Points
  - More than 20%: 5 Points
- Project will save \_\_\_% of local government's energy bills
  - 2% or less: 0 points
  - 3-9%: 1 Point
  - 10-19%: 3 Points
  - More than 20%: 5 Points
- Jurisdiction of local government is a Priority Investment Area for 2009 that is listed here will receive 5 points:
  - [http://www.development.ohio.gov/research/Reports\\_in\\_maps\\_economic\\_related.htm](http://www.development.ohio.gov/research/Reports_in_maps_economic_related.htm)

## Innovation, Transferability, Collaboration

### 15 Points Available

- Level of innovation of project that could be replicated in other communities.
- Demonstrated partnership/collaboration with multi-jurisdictional entities on location of project implementation.
- Level of commitment to share lessons learned with other communities. Committed number of case studies, tours, presentations, peer-to-peer networking.

## Cost Effective Measureable Energy Savings/Generation

### 15 Points available

- Total implementation cost divided by total energy saved, generated, or displaced (\$/MMBTU).
- Savings/generation estimates should be clearly represented, showing before measure consumption and estimated after measure consumption using Table 5.
- All supporting documentation should be included as well

## Leverage/Match

### 10 Points available

Match / leverage is not required, but a criteria for which points are available

Match is 0%	0 Points
Match is between 1% - 5%:	2 Point
Match is between 6%-10%:	4 Points
Match is between 11-15%:	6 Points
Match is between 16%-25%:	8 Points
Match is over 26%:	10 Points

Match can come from in-kind contributions, match must be documented.

# Additional Considerations: SHPO

## State Historic Preservation Compliance

<http://www.ohiohistory.org/resource/histpres/>

- The Ohio Energy Office has been working with Ohio's Preservation Officer to put into place an Memorandum of Understanding (MOU) regarding historic preservation. Should be out soon.

## Applies to:

- Structures over 50 years of age
- Buildings that are listed on the National Register of Historic Places
- Structures that are located in Historic Districts

Projects need to complete Section 106, attachment D

Working to get some activities exempted: 1 (Partial list of EE retrofits), 2 (energy distribution) 3 (traffic lighting), and 4 (reduction and capture of methane).

Renewables cannot be exempted, neither can day lighting, or replacement of windows and doors. Mitigation measures may be needed.

## National Environmental Protection Act (NEPA)

- Have been working with the U.S. Department of Energy to get guidance regarding which projects need to be reviewed for NEPA and which do not. Incorporated size restrictions and other early guidance into Ohio's RPF to expedite process.
- Activity 1 (EE retrofit), 4 (reduction and capture of methane) 5D (fuel cells), and 5E (biomass) must submit attachment E, NEPA compliance form EF-1
- Additional guidance received since RFP was issued:
  - Ground Source Heat Pumps of 5.5-ton capacity or small, horizontal/vertical, closed loop systems is the new size guidelines, not 10 ton as posted in the RFP
  - Biomass Thermal, 3MMBTUs per hour or small system

## Buy American Provision

To the greatest extent practicable, all equipment and products purchased with award funding should be American-made

Exception when cumulative cost of such material will increase overall cost of project by more than 25%

Working with DOE to get exceptions granted, but 3,000 awards have been given, and no exceptions have been granted yet.

## Davis-Bacon Compliance

- Laborers paid by Recovery Act funds must receive no less than prevailing local wage rates for construction or repair work.
- For Davis-Bacon guidance go to:  
<http://www.dol.gov/whd/contracts/dbra.htm>
- To determine labor rates go to:  
<http://www.wdol.gov/dba.aspx>
- City and County Government employees are automatically paid prevailing wage, so does not apply to projects that are installed by city/county employees, but does apply to contracts and subcontracts.

## Proposal Submittal Process

- Submit one original paper copy and 2 additional paper copies
- Submit one CD containing electronic copies of all documents submitted: application, exhibits, attachments.
- Deliver to:

Ohio Department of Development

Ohio Energy Office

EECBG – ARRA

77 South High Street, 26th, 27th Floor

Columbus, OH 43216-1001

# Application

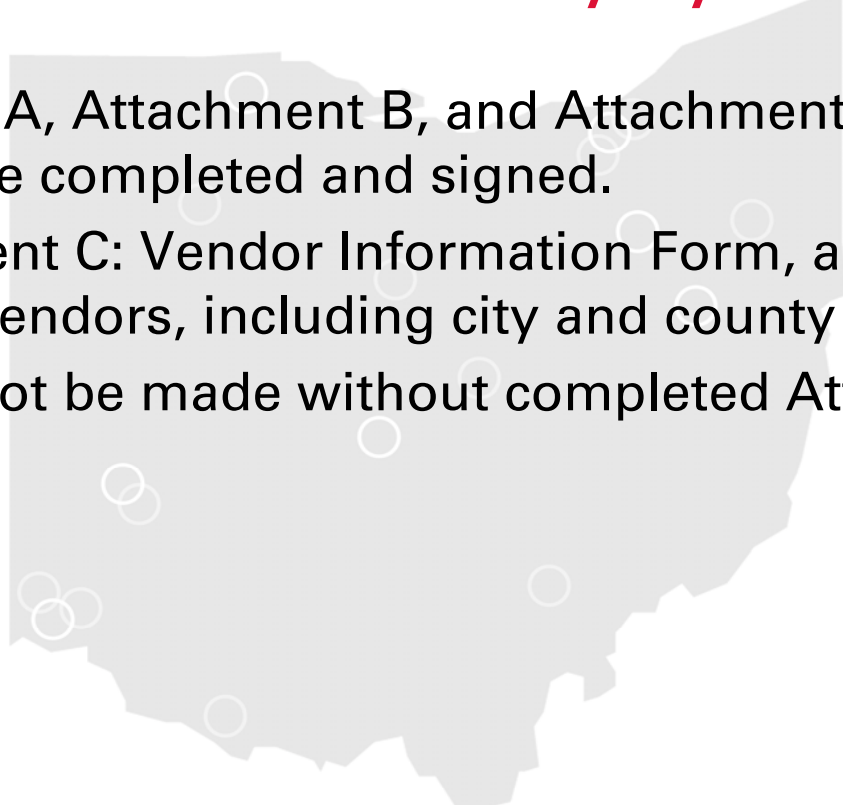
- Complete the application form, provide all information for exhibits, and complete all attachments and remember to sign documents where requested.
  - Central Contractor Registration (CCR) # should be your “CAGE #” and can be found at: <https://www.bpn.gov/CCRSearch/Search.aspx>

## Exhibits

- Respond to each request for forms, budget information, waste stream compliance plans, signed assurances, contact information, financial liability, and audit policy



## Attachment A, B, & C

- Attachments A, Attachment B, and Attachment C are all required to be completed and signed.
  - For Attachment C: Vendor Information Form, all applicants are considered Vendors, including city and county governments.
  - Awards cannot be made without completed Attachments
- 

## Attachment D & E

- Ohio cannot make awards until each project has been signed off by Ohio's Historic Preservation Officer. For structures over 50 years old, in a historic district, or listed on the historic registry, complete Attachment D, Section 106 review.
  - This form will be forwarded to Ohio's preservation officer and takes 30 days to get a determination.
- Ohio cannot make any awards until NEPA sign off has been received by U.S. DOE, complete attachment E if required. Projects will be forwarded
  - This form will be forwarded to DOE for review.

## Attachment F & G

- Use Attachment F for additional activities. A planned activity and associated costs should be completed for each activity you are proposing.
- Use Attachment G for additional activities. Energy savings/displacement/generation per year table should correspond to each activity proposed.

## Questions and Answers

Questions and responses that have already been received have been posted [HERE](#):

Questions received during this bidders conference have been recorded and answers will be posted on our website soon.

Additional questions can be submitted via e-mail to: [Recovery.Tibbs@em.ohio.gov](mailto:Recovery.Tibbs@em.ohio.gov) or faxed to: 614-466-1864

## Additional Resources

- U.S. DOE Solution Center–Best practices and tools
  - Accessible from [www.eecbg.energy.gov](http://www.eecbg.energy.gov)
- Environmental Protection Agency
  - Local Governments: <http://www.epa.gov/RDEE/energy-programs/state-and-local/recovery.html>
  - Lead by Example best practices: <http://www.epa.gov/cleanenergy/energy-programs/state-and-local/state-best-practices.html>
- Portfolio Manager, a publically available and free interactive energy management tool that allows you to track and assess energy and water consumption across your entire portfolio of buildings:
  - [http://www.energystar.gov/index.cfm?c=evaluate\\_performance.bus\\_portfoliomanager](http://www.energystar.gov/index.cfm?c=evaluate_performance.bus_portfoliomanager)



# Contact Information

Greg Payne

Ohio Department of Development

[Greg.payne@development.ohio.gov](mailto:Greg.payne@development.ohio.gov)

614-466-7387